

FARMERS MARKET AND HEALTHCARE ACCESS SHUTTLE PROGRAMS



PI SOLUTIONS

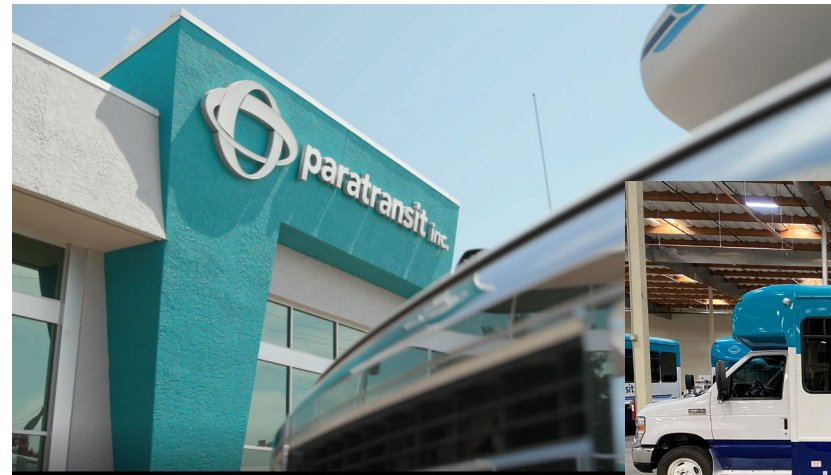
EMPOWERED BY PARATRANSIT

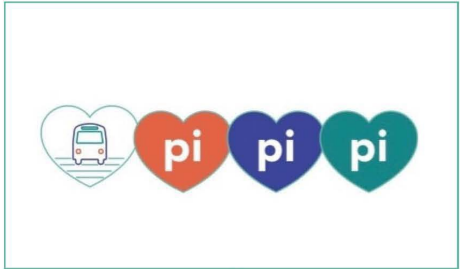
Who is Paratransit, Inc.?



As a Consolidated Transportation Services Agency (CTSA) we offer a host of transportation services to individuals and organizations including:

- ADA Eligibility
- Travel Training Services
- Shared Vehicles
- Contract Transportation
- Community Based Shuttles
- Driver Training
- Vehicle Maintenance/Taxi Inspections
- Adaptive Vehicle Rentals
- Shared Bike and Scooter Instruction
- Mobility Management Consulting Services





Paratransit's Mission:

To expand mobility and accessibility by providing innovative programs and services to the Community.





In 2022, the White House convened the second ever conference on Hunger, Nutrition and Health to address the growing issues related to food insecurity in America. Prior to the conference listening sessions were held around the Country including a session in Sacramento, which Paratransit was invited to (and participated in) due to our extensive work in this space during the pandemic. The result was a the release of a plan to improve food access and health in America with a focus on 5 pillars:

- 1. Improve Food Access and Affordability**
- 2. Integrate Nutrition and Health**
- 3. Empower Consumers to Make and Have Access to Healthy Choices**
4. Support Physical Activity for All
5. Enhance Nutrition and Food Research



In 2022, Paratransit, Inc. submitted a grant to the USDA in partnership with Alchemist and Meals on Wheels to begin to address the White House's findings related to access to food.

The result was the creation of the people to produce program. The initial route serves South Sacramento and connects the Pannell Center with the Florin Road Farmers Market.

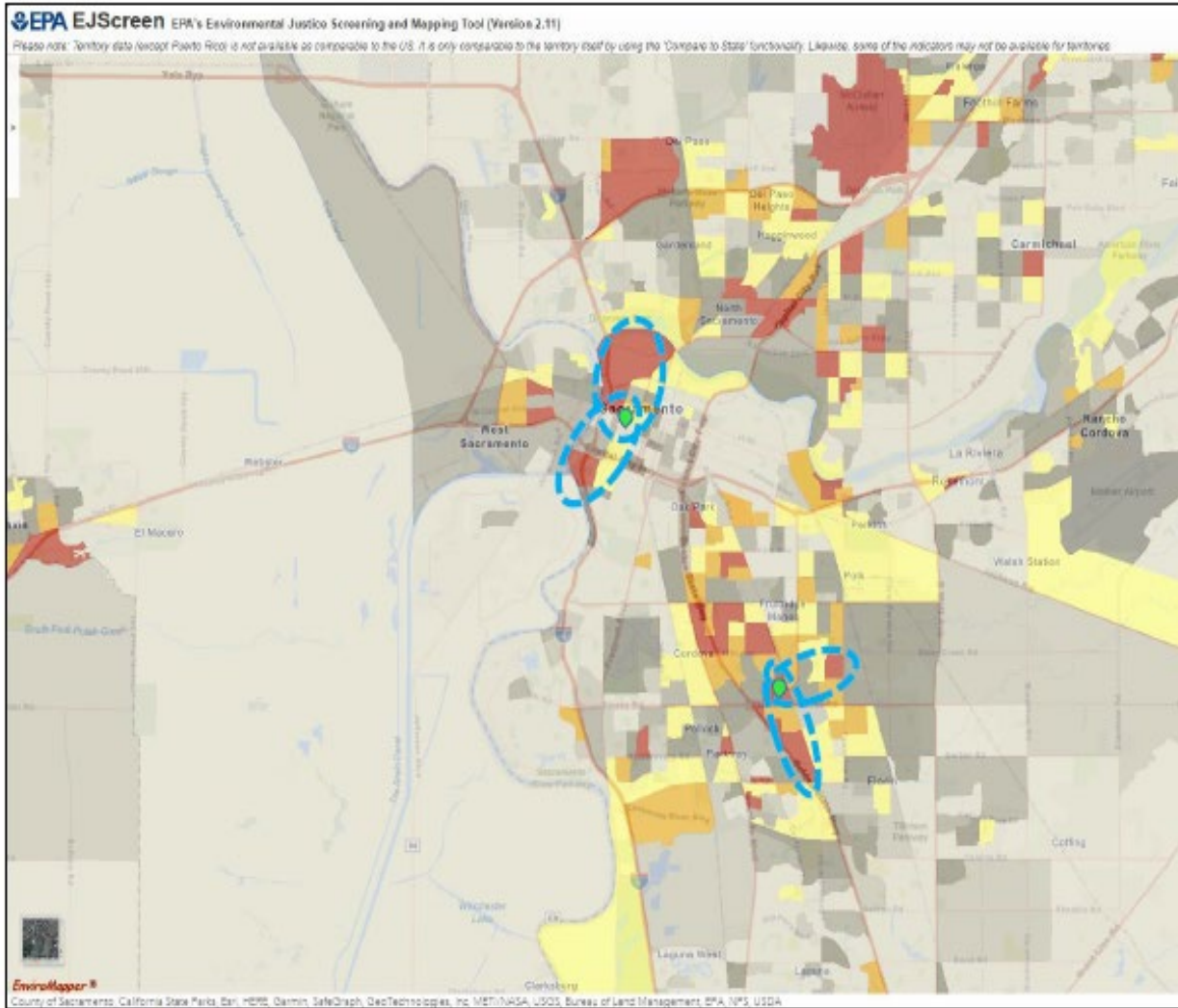
In its first week alone, this route saw 194 boardings, all within a 3 hour operational span, served by 2 buses. That equates to 32 passengers per revenue hour and a cost of \$2.81 trip.

The proposed Farmers Market Shuttles would expand this pilot program to offer 4 additional routes, connecting some of the County's most underserved food communities to our Ag economy and meeting 3 of the pillars identified by the White House.



**People to
Produce**
EMPOWERED BY PARATRANSIT





People to Produce: Farmers Market Shuttles

The Zones for the routes include:

1. Upper Land Park/Broadway/Midtown/Downtown
2. Midtown/Downtown/ Railyards/ Richards Blvd/ South Natomas
3. South Sacramento/Gerber/Franklin/Mack Road
4. Oak Park/ Colonial Heights/ Fruitridge/ Florin



PI SOLUTIONS
EMPOWERED BY PARATRANSIT

People to Produce: Farmers Market Shuttle Details

Wednesdays:

1. Upper Land Park/Broadway/Midtown/Downtown
2. Midtown/Downtown/ Railyards/ Richards Blvd/South Natomas

Thursdays:

1. South Sacramento/Gerber/Franklin/Mack Road
2. Oak Park/ Colonial Heights/ Fruitridge/ Florin



Each route will be operated by 2 buses on staggered headways increasing the coverage and offering riders multiple options depending how long they need to shop

Each bus has been outfitted to have 16 seats (cutaways are usually configured for far fewer) and have seatback handles and overhead safety handles to accommodate up to 10 standees.





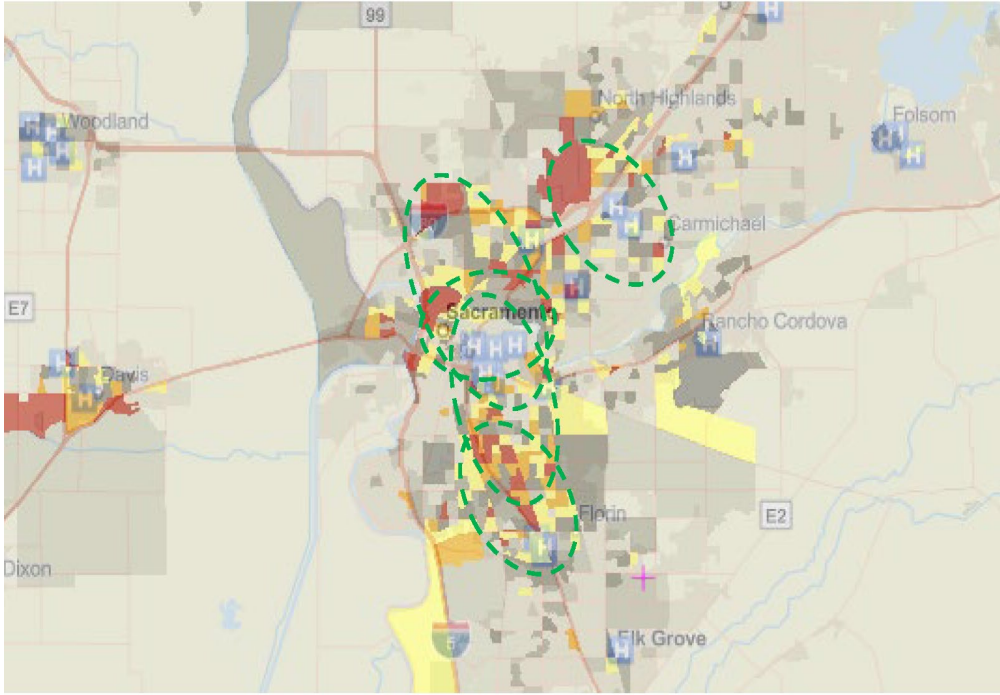
Health and Human Services has identified a national need for Expanded Access to Healthcare and has created the Healthy People 2030 Initiative to address health outcomes in underserved communities.

Goal: Increase Access to Comprehensive, High-Quality Health Care Services

“This goal highlights the need to increase the proportion of adults who get recommended evidence-based preventive health care.”



Access to Healthcare Shuttles:



The Zones for the routes include:

1. Arden/Arcade and Carmichael with connections to Mercy San Juan and Kaiser Morse
2. Midtown/Downtown/Broadway with connections to UC Davis Health, Mercy, Sutter and numerous community clinics
3. Oak Park/ Tahoe Park/Colonial Heights/ Fruitridge/Lemon Hill with connections to UC Davis Health, Mercy, Sutter and numerous community clinics
4. North Natomas/South Natomas/Gardenland with connections to Sutter, Mercy, SNAHC and numerous community clinics
5. North Sacramento with connections to Sutter, Mercy, SNAHC and numerous community clinics

6. Franklin/Gerber/Mack/Vineyard with Connections to South Sacramento Medical center including Kaiser South and Methodist Hospital

7. Greenhaven/Pocket/ Florin/ South Land Park with access to Kaiser South and Methodist Hospital

8. Elk Grove to South Sac Medical center including Kaiser South and Methodist Hospital

Access to Healthcare: Shuttle Details

- Each route will operate at initially one day a week, with each weekday seeing two different routes in operation through out the County.
- Routes will serve medical centers, existing light rail and bus stops in the corridor and community centers/local meeting locations.
- Each route can deviate up to 3 times per trip to offer curb to curb service to passengers along the corridor.
- Deviations can be requested up to a week prior and no later than end of business day prior



Paratransit has begun conversations with the healthcare systems to enhance and tailor these routes to best serve the community. Marketing will be done both directly to the general population, as well as, through direct referral from the social workers, clinics and physicians.

Transit connects the Community
but when the Community is
connected to Transit, it thrives!

Proposed Performance Metrics

Shuttle Type	Boardings annually	Hours Operated annually	Miles Operated annually	Expected Passengers per revenue hour
Farmers Market	26,624	1,664	24,960	16
Access to Healthcare	53,248	6,656	99,840	8

Total Boardings Annually: 79,872

Funding Requested: \$185,000

Cost per Boarding: \$2.32



Questions?

